



TOMRODS LTD
STEEL STOCKHOLDERS

HEALTH & SAFETY INSTRUCTIONS

Customer Collections

Tomrods Ltd

To help maintain the good health and safety practices to which Tomrods Ltd is fully committed and ensure your safety whilst on our premises, please could all Customers follow the rules below:-

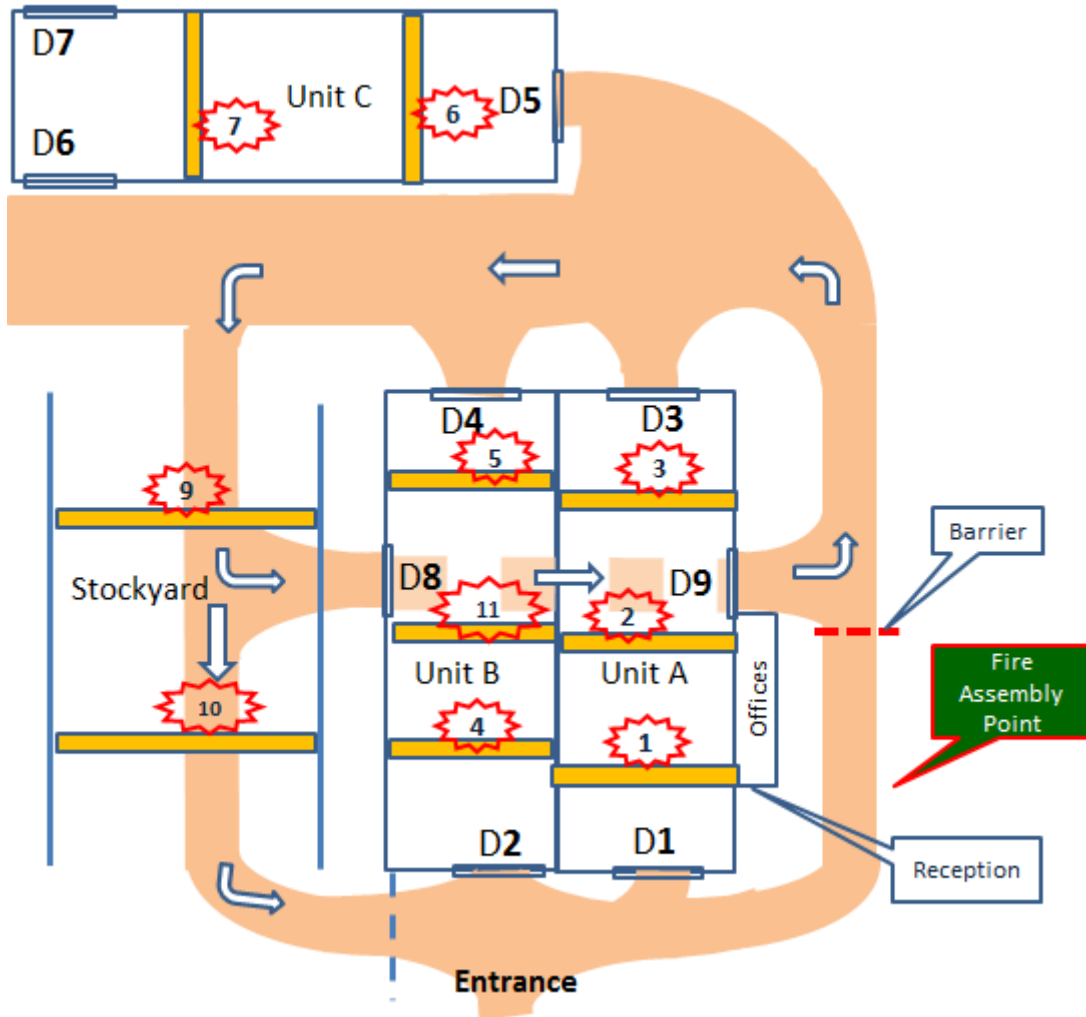
Customers Collections

- ❑ Please ring when you arrive on site, contacts are Alex Clancy 07714 454919/ Andy Mather 07809 656448
- ❑ Face Masks must be worn by all visitors at all times.
- ❑ On arrival you will be asked to use the automated temperature checking system located in reception and answer the Self-Declaration Questionnaire. This can be done in the main entrance providing the 2m distancing rule can be applied at all times. Access will be approved if your temperature is below 37.3 degrees and the Self-Declaration is approved.
- ❑ All customers must keep to the 2 metre distancing rules at all times and use the hand sanitizer provided at all doorways.
- ❑ Customers can use the toilet facilities and to wash their hands regularly.
- ❑ Customers must not enter or use the canteen facilities.
- ❑ Please observe all Health and Safety signs and notices.
- ❑ You must wear a helmet (hard hat) and Hi-Vis coat, jacket or waistcoat. If you do not have your own please ask Tomrods staff for the loan of a waistcoat or helmet. (Please return any borrowed items to a member of Tomrods staff as you leave).
- ❑ When entering the works or any outside areas, you must remain with your vehicle at all times.
- ❑ When driving onto the site please follow the one way system, and observe the 5mph speed limit.
- ❑ Members of staff are working on and around the roadways so please stop and wait to be moved on if you see anyone working to ensure everyone's safety.
- ❑ When entering the warehouses in your vehicle please stop at the entrance and sound your horn, please wait for someone to guide you in as they will ensure the way is clear for you to enter.
- ❑ You must not handle any material unless supervised by Tomrods Personnel.
- ❑ Please observe all Health and Safety signs and notices.
- ❑ In the event of hearing any alarms consult with the nearest Tomrods employee regarding what action to take.
- ❑ Please note it is your responsibility to ensure that your load is safe and secure before leaving our site.

Andrew Shakespeare
Managing Director

Thank you for helping us make our Warehouse and Site a safer place.

Tomrods Ltd



Customer Collections

Item	Location
Flats	Door 8, Through to Unit A
Box Section	Door 8, Through to Unit A
Plate	Door 8, Through to Unit A
Saw Cut	Door 8, Unit B
Beams/Columns	Stockyard
Weldmesh	Door 8, Through to Unit A
12m+ Angles	Door 1
10m+ Channels	Door 1
6m Channels	Door 8, Through to Unit A
ERW	Door 8, Through to Unit A
Open Mesh Flooring	Stockyard
Mesh	Stockyard